

Welcome to Glentress

This exhibition is being held to provide the local community with the opportunity to understand and comment on the proposal for Glentress. Community consultation is extremely important to Forest Enterprise Scotland and, as such, we urge you to provide your comments once you have reviewed our plans.

Our Plans for Glentress

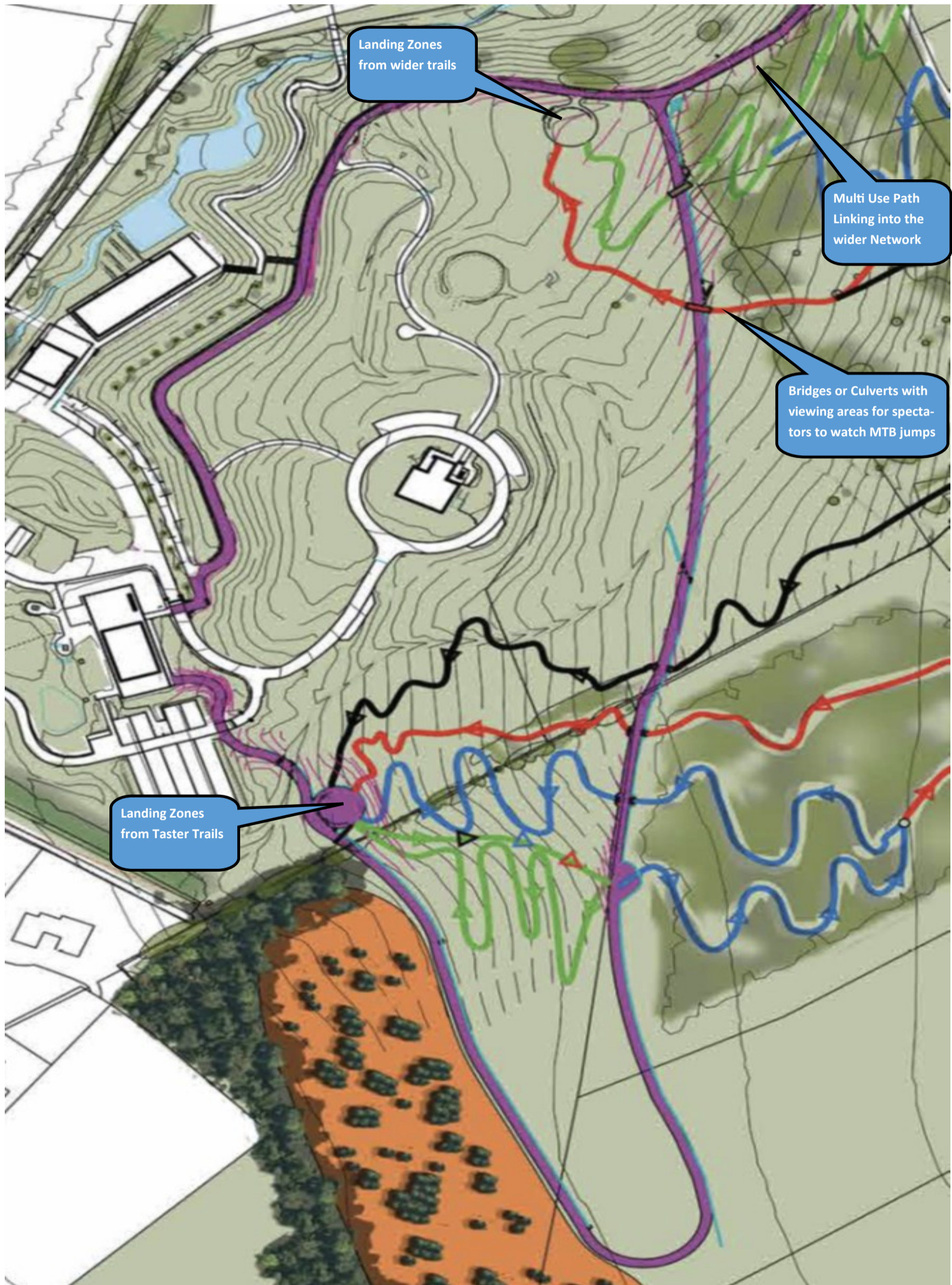
- ◆ A new Skills arena for mountain bikers of all ages and abilities to hone and improve their skills
- ◆ A new set of Taster / Qualifying trails that can be used to test your abilities before riding the larger trails
- ◆ A new Multi Use Path that is easily accessible and links up all the trails as well as the new Skills area and taster trails
- ◆ New trails connecting to the wider 7stanes trail network with standout descents
- ◆ Replacement of existing car parking facilities being lost at Buzzards Nest Car Park
- ◆ New Car Park Management System to enable full car park capture
- ◆ Some additional Infrastructure and Engineering works



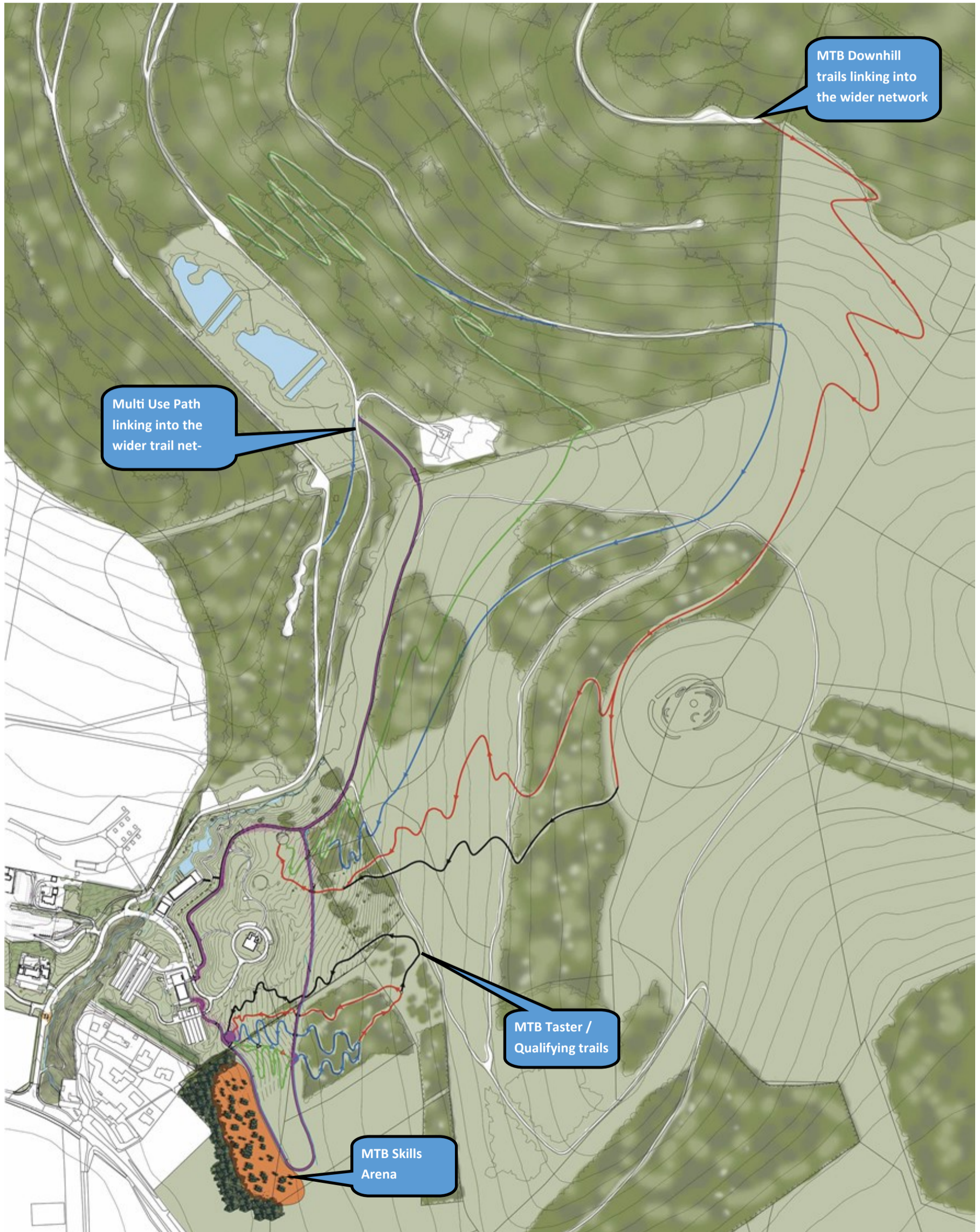
A New Skills Arena and a new set of Taster / Qualifying trails



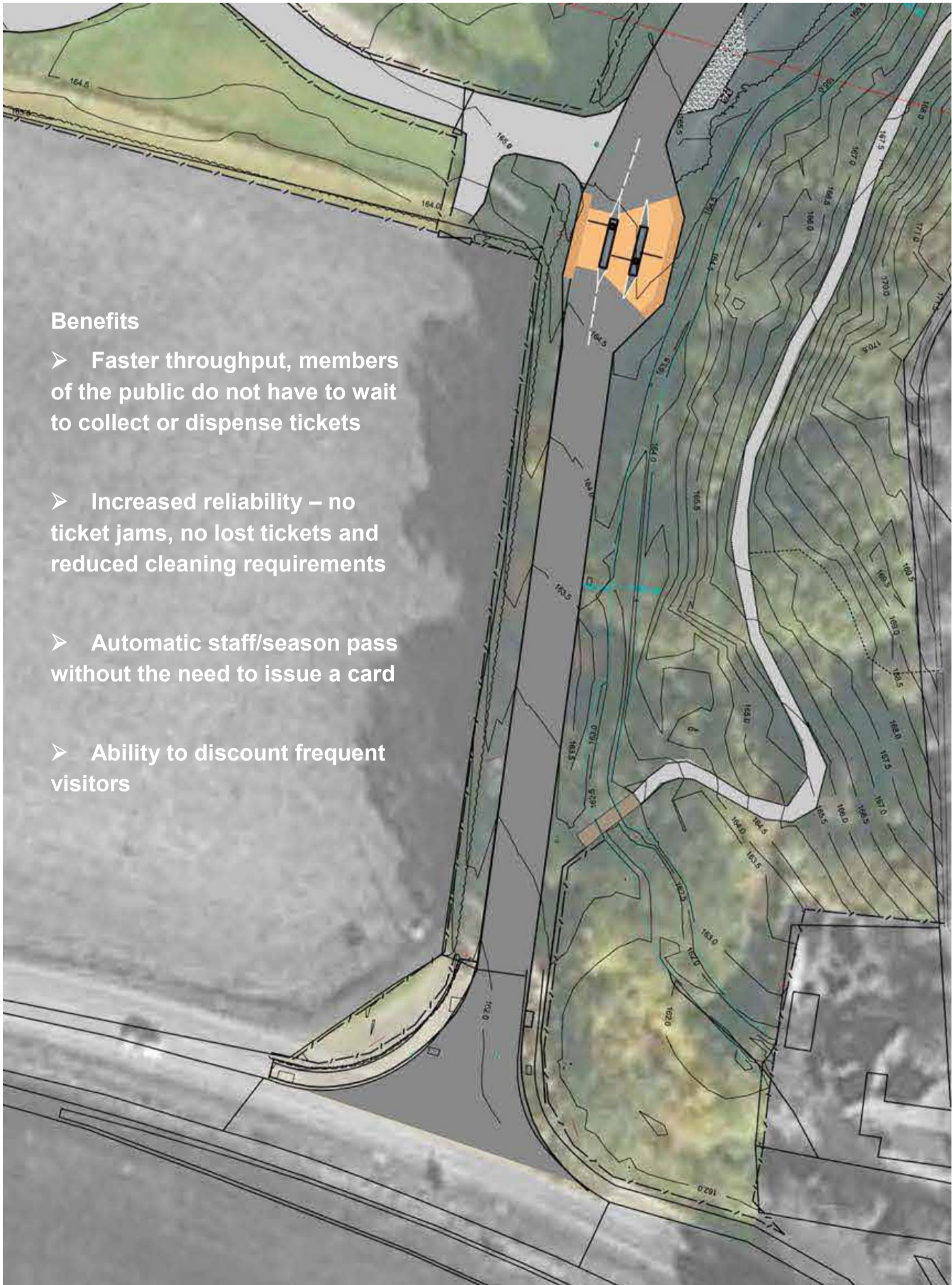
A new Multi Use Path that is easily accessible and links up the all the trails as well as the new Skills area and taster trails



Exciting new trails connecting to the wider 7Stanes trail network with standout descents



New Car Park Management System



Benefits

- Faster throughput, members of the public do not have to wait to collect or dispense tickets
- Increased reliability – no ticket jams, no lost tickets and reduced cleaning requirements
- Automatic staff/season pass without the need to issue a card
- Ability to discount frequent visitors

Transport Implications of the proposed developments

Banners Gate Transportation Ltd has been commissioned to study the transport implications of a development of 56 holiday cabins on behalf of Forest Holidays. The company has experience in promoting planning applications for holiday cabins locations in Scotland, England and Wales.

Over recent months, traffic surveys of activity at Glentress have been completed and this data has been studied in conjunction with known traffic movements generated by a development of holiday cabins. This information is collated to assess the traffic impact of the project. In this instance, it is important to provide a guide to the traffic generation of the cabins and the existing demand for parking that occurs in the area of Buzzards Nest car park which would be utilised by the development.

As a guide, the cabin experience is based around holiday bookings of weekend breaks from Friday to Monday or alternatively four-day stays from Monday to Friday. Longer stays are possible but importantly all permutations focus arrivals and departures on a Monday and Friday. Departures occur mid-morning due to a need for a 'check-out time' whilst arrivals are staggered on Monday and Friday afternoons to assist staff and spread traffic activity. Traffic flows are summarised as follows:

A development of 56 cabins at Glentress		Arrivals	Departures
Friday afternoon	4pm to 5pm	28	14
Monday morning	10am to	17	34

A development of 56 cabins at Glentress (two-way, arrivals and departures)	
Total daily flows on either Monday or Friday afternoon	240 vehicles
Total daily flows on either Tuesday, Wednesday or Thursday	150 vehicles
Total daily flows on either Saturday or Sunday	220 vehicles

Typical traffic flows at Glentress (two-way, arrivals and departures)	
Saturday or Sunday	900 - 1,100 vehicles per day
Typical weekday	400 vehicles per day.
May bank holiday Monday	800 vehicles per day.
Typical maximum hourly flow	140 vehicles

Peak traffic flows to the holiday cabins occurs at a time when the quantities of traffic on the surrounding roads are lower. The cabins also generate flows at the weekend although these flows are not significant and may be around 20% of existing traffic flows at Glentress. The traffic from the cabin project would have a minimal effect on the operation of the junction with Innerleithen Road.

Buzzards Nest car park would be closed as part of the project. Only visitors with cabin bookings would be able to drive to this part of the forest. Surveys of parking over a busy bank holiday weekend have been completed at all parking areas at Glentress. The work seeks to establish an accurate guide to parking demand and ensure sufficient capacity is available in the event of development. Overflow parking areas are currently available and these would be improved and expanded as necessary to ensure parking is available for all.

Buzzards Nest car park	88 spaces (4 isles of 22 spaces)
Replacement parking	At least 100 spaces

The cabin project would also focus on the importance of a safe and enjoyable leisure experience for all with an emphasis on walkers and mountain bikers. For example, the proposals would include a new skills area, a shuttle service for bikes from the visitor centre to Buzzards Nest car park and improvements to the pedestrian environment particularly at the junction with Innerleithen Road.

